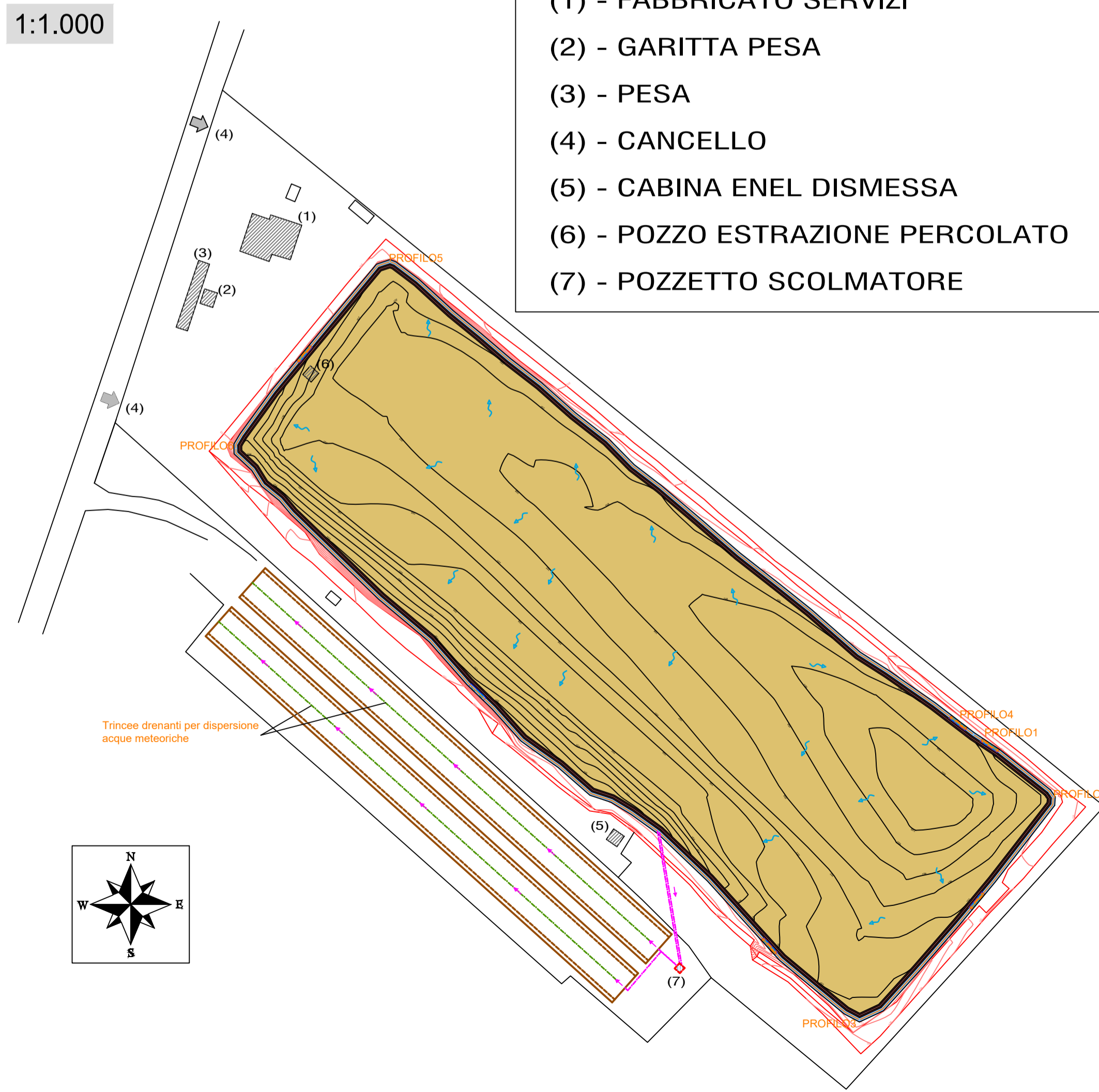
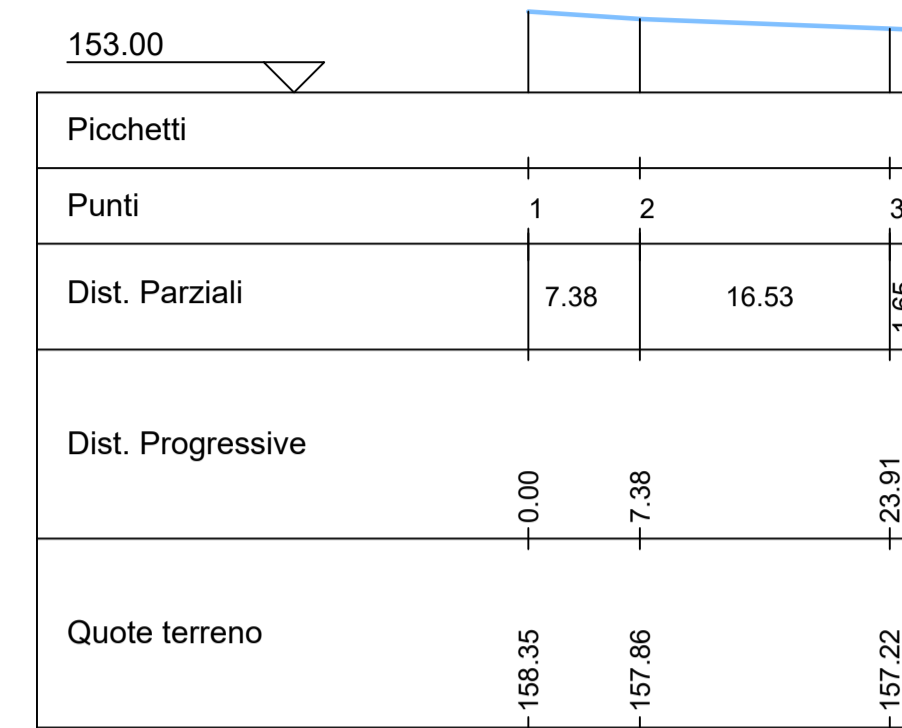


- LEGENDA MANUFATTI**
- (1) - FABBRICATO SERVIZI
 - (2) - GARITTA PESA
 - (3) - PESA
 - (4) - CANCELLO
 - (5) - CABINA ENEL DISMESSA
 - (6) - POZZO ESTRAZIONE PERCOLATO
 - (7) - POZZETTO SCOLMATORE

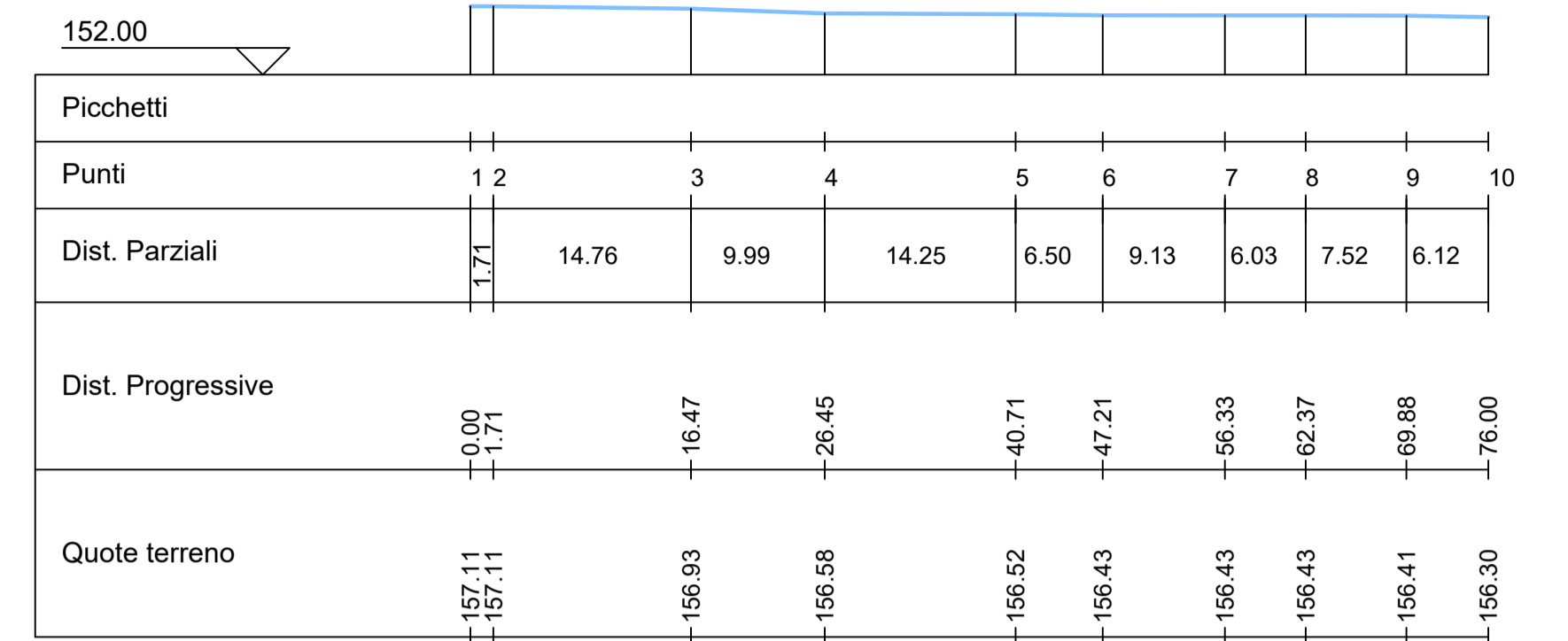


1:500

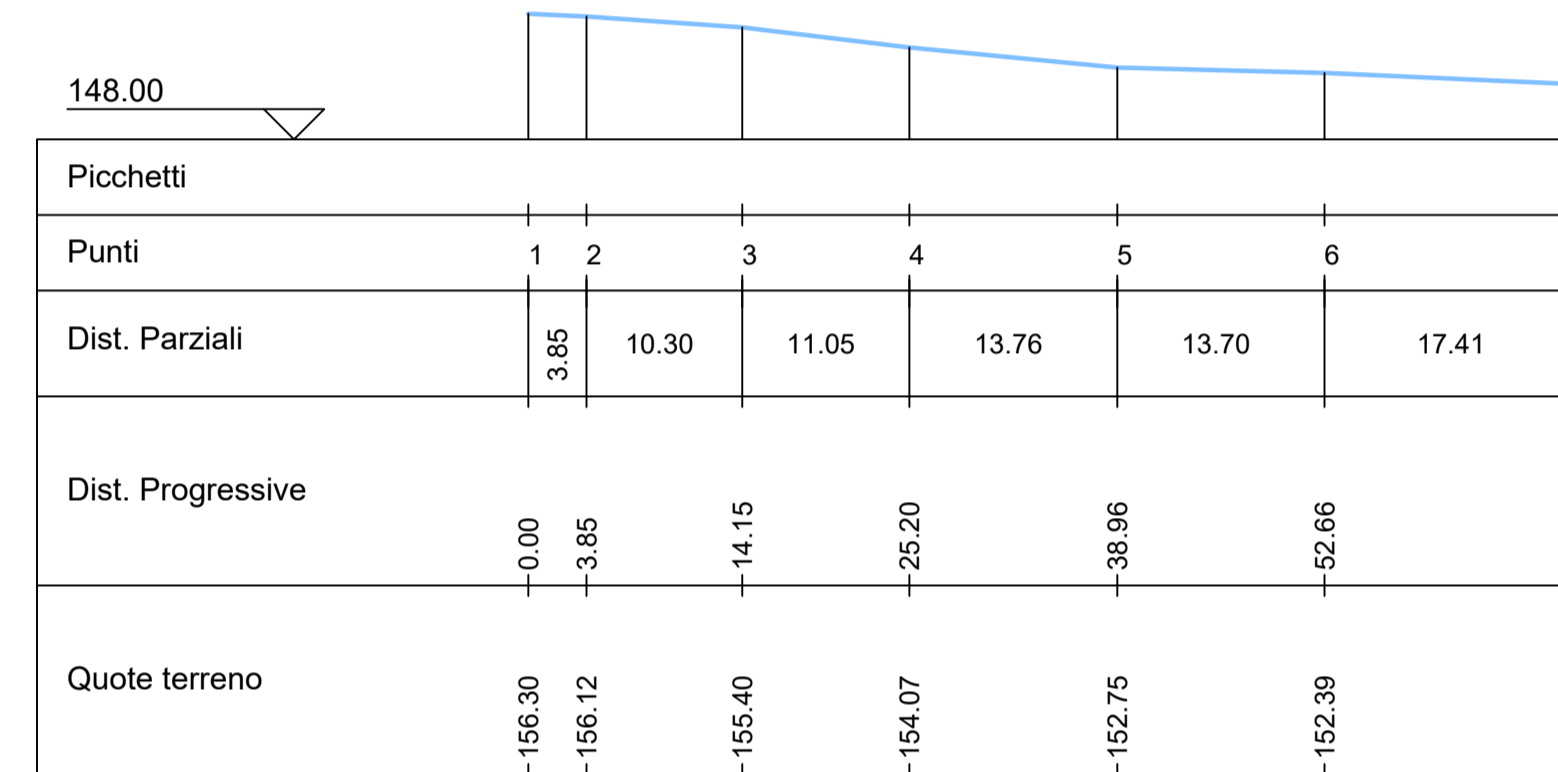
PROFILO1



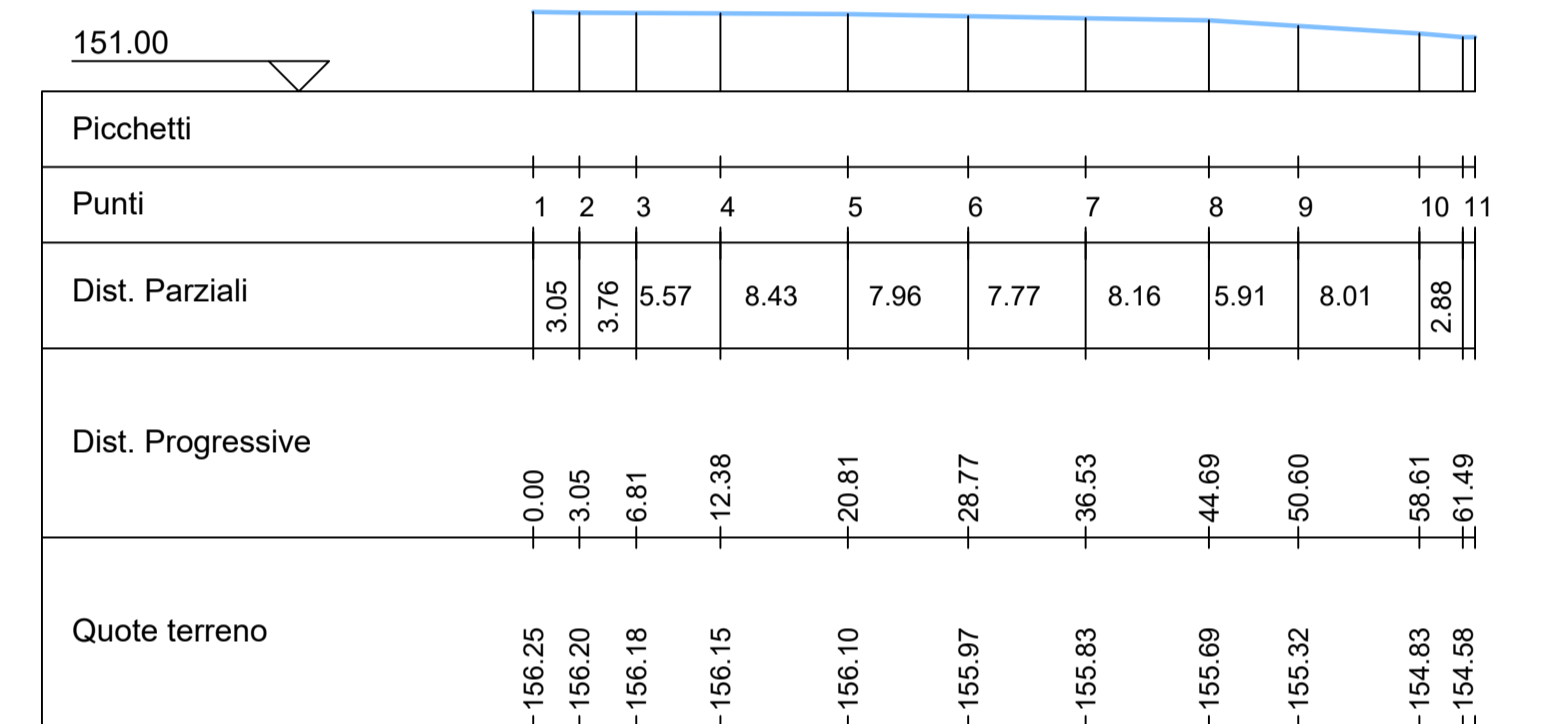
PROFILO2



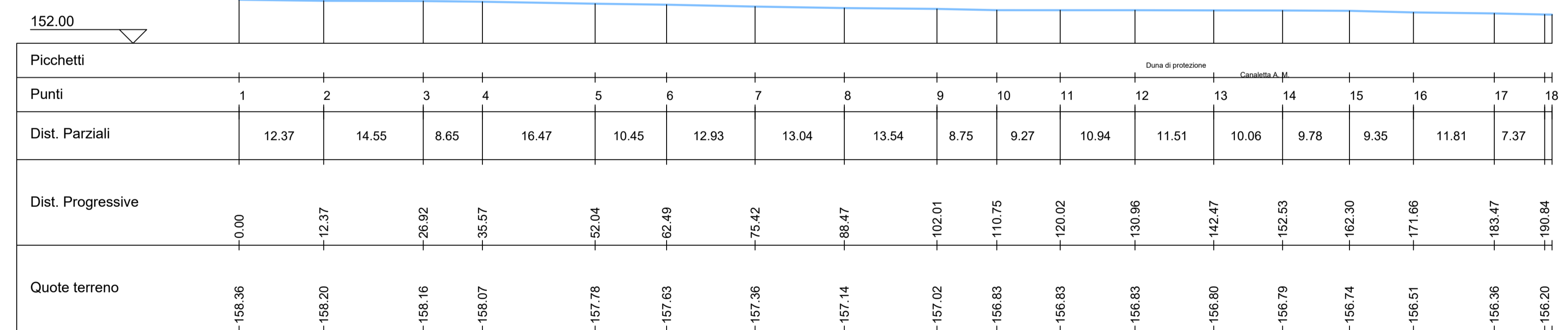
PROFILO3



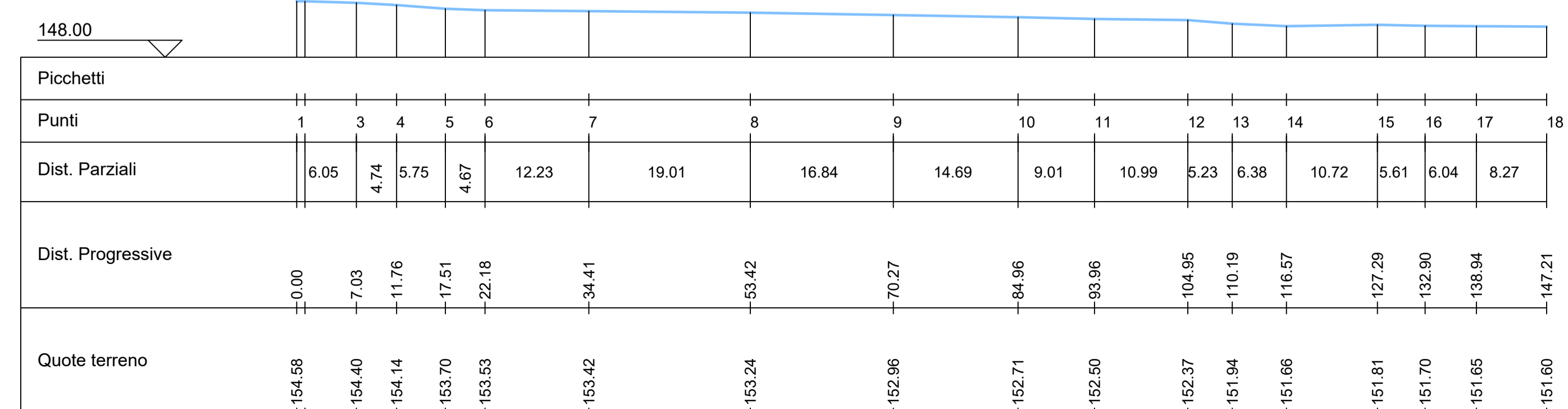
PROFILO5



PROFILO4



PROFILO6



Provincia di Barletta - Andria - Trani

PROCEDURA INFRAZIONE COMUNITARIA 2011/2015
PIANO DI ADEGUAMENTO D.LGS. 36/2003
DISCARICA CO.BE.MA. - CANOSA DI PUGLIA (BT)

PROGETTO DEFINITIVO
 Chiusura e post gestione ex art.12 DLgs 36/2003

Oggetto: **Planimetria e sezioni canaletta perimetrale**

Tav. **10**

RUP: Ing. Francesco LOMORO

I Progettisti
 Dott. Ing. Angela RICCARDI
 Dott. Ing. Giuseppe MARSELLI

Data: dicembre 2019 Scala: var. File: Aggiornamento: